

YOTUEL®

Innovation for quality of life.

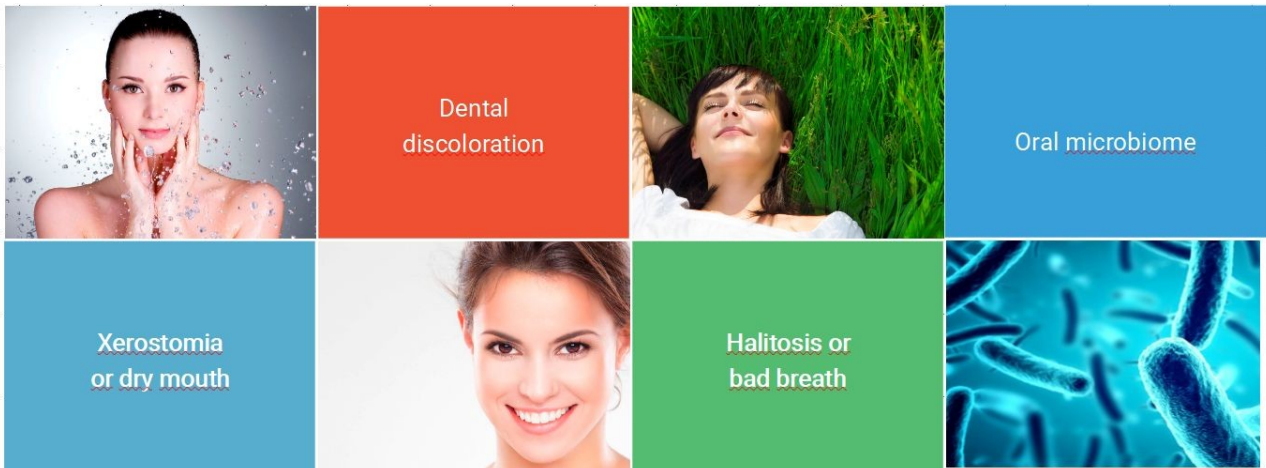


Biocosmetics Laboratories are a dental pharmaceutical laboratory specialised in the research, development, manufacture, sale and distribution of oral hygiene products located at the forefront of oral care and with a global presence. ...With the values of a family company.

R&D

*More than 130 patents worldwide.
Studies with the most renowned universities.
Publications in prestigious journals.*

Areas of investigation



VISION

To promote health & improve quality of life.

MISSION

Caring for the oral cavity and general health given the close relationship of the two.

VALUES

Honesty and trust in our consumers, employees and partners.

BIOCOSMETICS COMMITMENTS

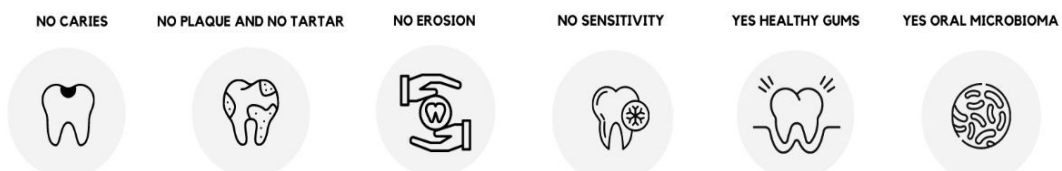
The global commitment of Biocosmetics Laboratories since 1994, has been to remain at the forefront of oral care through research based on continuous improvement.

The result of this research are the more than 130 patents filed all over the world.

QUALITY GUARANTEE

Quality as the main driver of our research and ways of working:

BIOCOSMETICS COMMITMENT TO HEALTH

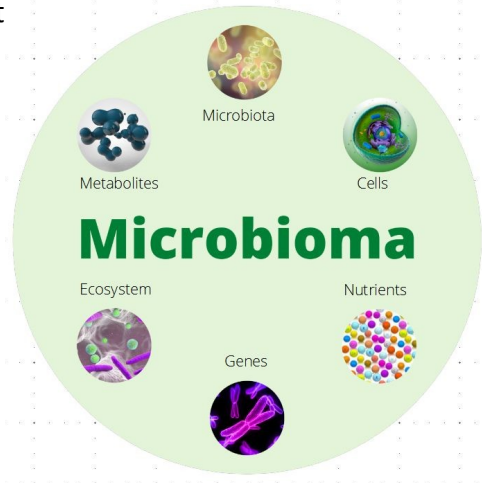


WHAT IS OUR MICROBIOME?

The human body is made up of 30 trillion cells that make up our organs and an equal number of microscopic microorganisms that inhabit the mucous membranes and skin of our body, constituting what is known as the Human Microbiome*.

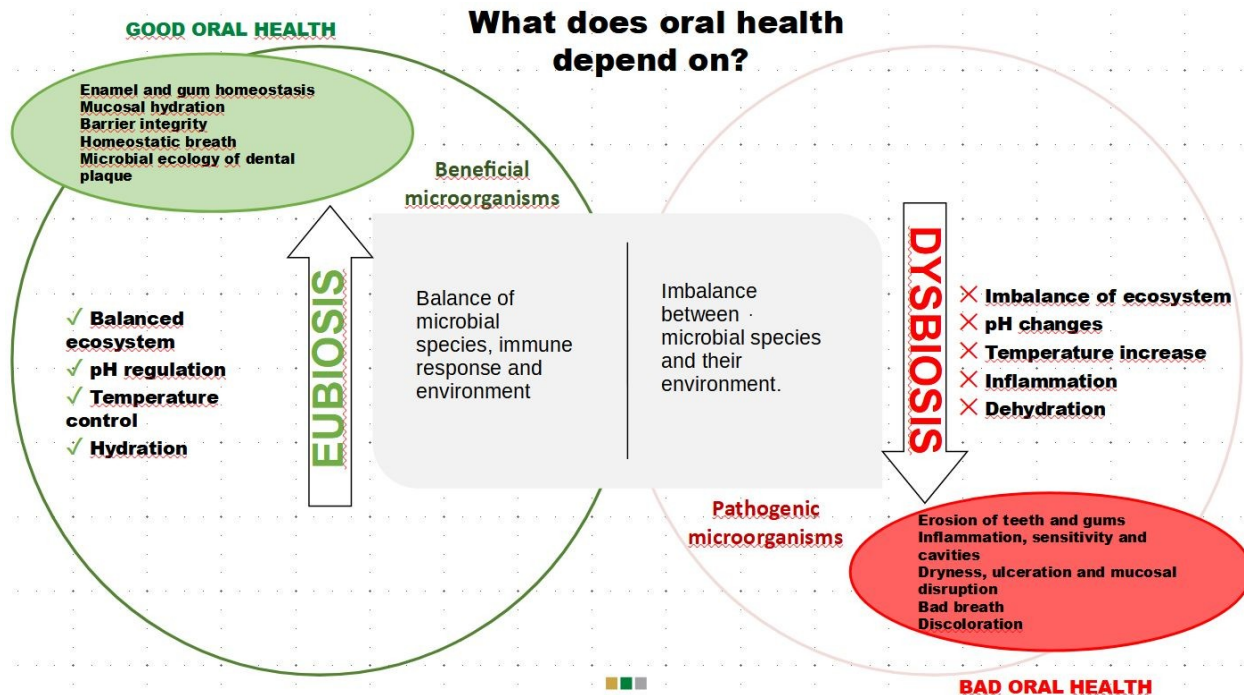
The microbiome is made up of microorganisms and their habitat (ecosystem).

It performs functions that we are not capable of performing and essential substances for our health and well-being are synthesized in it, constituting the first line of defence against infections by pathogenic and harmful agents.



It is necessary that there is a physical separation between the microbiome and the human body and that the barrier of the skin and mucous membranes remains intact. There must be a bidirectional positive action between the host and the microbiome, so that there is a relationship of symbiosis and health.

*(Revised Estimates for the Number of Human and Bacteria Cells in the Body, 2016).



What is the main cause for microbiome imbalance?

LIFESTYLE

- Diet (child and adult)
- Habits (age, cultural level)
- Medicines
- Antibiotics
- Antiseptics
- Alcohol and tobacco
- Hyperconnectivity
- Stress

What consequences can oral dysbiosis have?

Four of the most frequent oral diseases (WHO) occur as a consequence of dysbiosis



- Dental caries
- Periodontal (gum) disease
- Oral cancer
- Infectious oral diseases

Canker sores and ulcers - Tooth discoloration - Bad breath

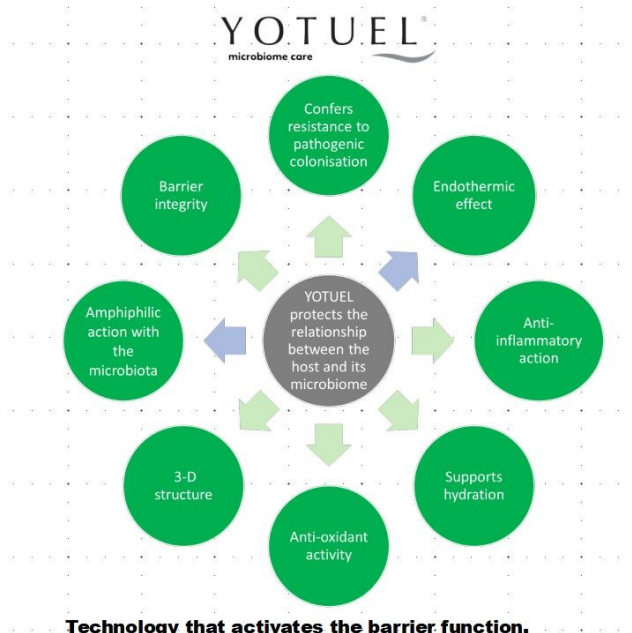
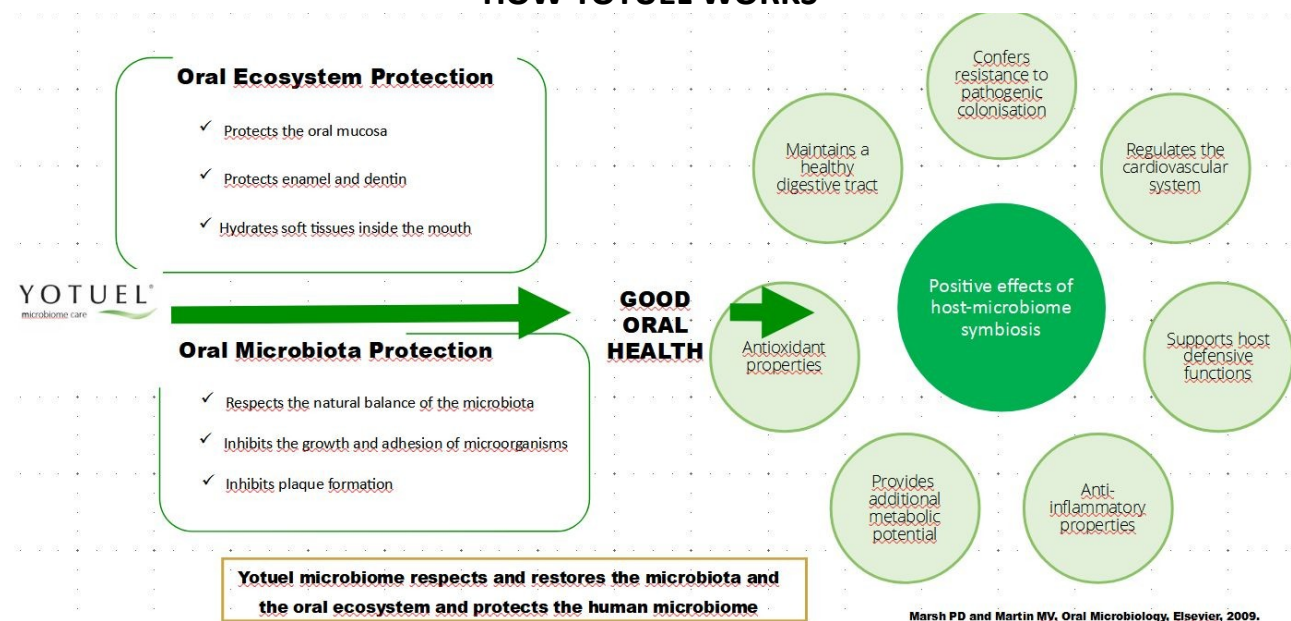
After more than 70 years fighting against oral biofilm, the statistics of caries, periodontitis and oral cancer in Europe continue to grow. Caries is the most prevalent chronic disease in the world. In Spain, almost all adults and about 40% of the child and youth population are affected by this pathology.

Likewise, periodontal disease affects some 6 million adults in Spain, of which 10-15% have the severe form.

https://www.who.int/oral_health/en/

<https://gacetadental.com/2022/02/aun-no-existen-herramientas-diagnosticas-efectivas-para-predecir-la-caries-o-la-enfermedad-periodontal-115454/>

HOW YOTUEL WORKS



• Presents a formula with the worldwide patented and registered composition with Sallactive® Technology, with prebiotics of plant origin, anti-inflammatory, and natural polyphenols with antioxidant action.

- ✓ **It confers resistance to the proliferation of pathogens.**
- ✓ **Protects enamel and dentin from demineralization, erosion and caries.**
- ✓ **Anti-inflammatory and endothermic action (refreshing).**
- ✓ **Osmoprotective capacity (provides hydration and balances the water balance).**
- ✓ **Moisturizing and lubricating action that reduces irritation in soft tissues.**
- ✓ **Helps restore natural defenses and maintain the integrity of the barrier.**
- ✓ **Ability to increase salivary flow and increase the natural defense of the mouth**
- **Yotuel respects and restores the microbiota and the ecosystem and protects the human microbiome (The Oral-Gut connection®). Helps keep the microbiome of the mouth in balance to play it's role of defence of the body.**

The Oral-Gut connection®

The mouth is the body's first defence barrier against viruses and bacteria.

Studies, reviews and research highlight the role of the oral microbiota in the development of various pathologies, generally serious, and end up compromising the person's quality of life and health.

Oral – gut –liver : Microbiota, cirrhosis and the emerging oral-gut-liver axis

Oral – lung : the oral-pulmonary axis: the impact of oral health on lung health.

Oral – gut axis : relationship of oral microbiota and rheumatoid arthritis, gastrointestinal cancer, inflammation.

Exploring the association between Alzheimer's, oral health, microbial endocrinology and nutrition

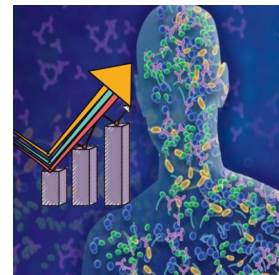
Intestinal, etc.

The YOTUEL® microbiome range of products help to keep the mouth's microbiome in balance.

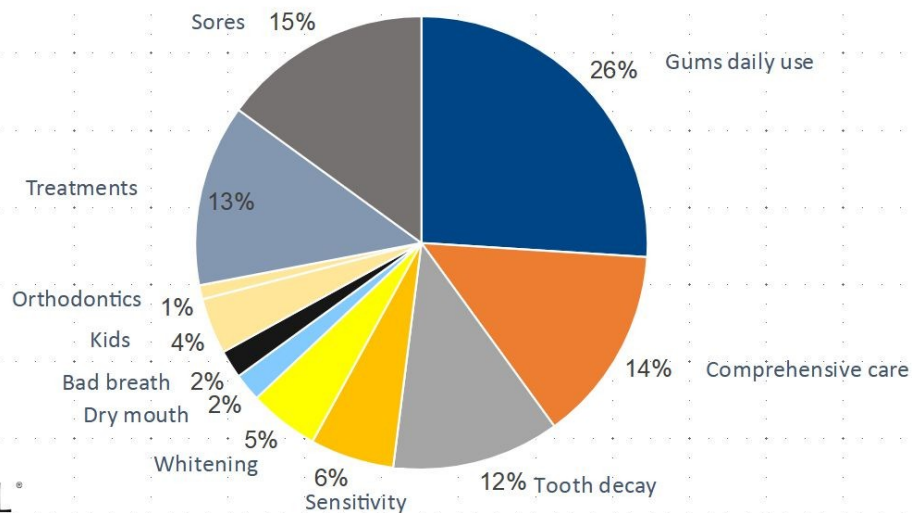
The microbiota and its environment must be in optimal condition to play the role of defence of the body.

Analysis of the Microbiome market

- Microbiota business is a growing market
- More research and development
- More clinical studies
- Marketing focus as a new tendency
- Wellness consumer care consciousness
- Future of healthcare



Oral Hygiene Market



YOTUEL[®]
microbiome care

- ✓ Protects the oral ecosystem
- ✓ With prebiotics
- ✓ Whitening
- ✓ Not tested on animals
- ✓ Suitable for vegans
- ✓ 100% recyclable packaging
- ✓ Packaging from renewable sources

PRODUCT RANGE



Enzymatic whitening

With carbamidé peroxide

With **YOTUEL microbiome**, you choose



#youchoose

YOTUEL[®]
microbiome one
premium whitening dentifrice



How YOTUEL microbiome one works

- ✓ Cares for the oral microbiome
- ✓ Whitening efficacy with carbamide peroxide, the whitening ingredient used by dentists
- ✓ SLS free

Target consumers

- ✓ People concerned about their health and their appearance.
- ✓ Those who desire bright, white teeth

YOTU^{EL}

erosion teeth & gums
microbiome care dentifrice



- ✓ Protects the oral ecosystem
- ✓ Protects against erosion of teeth and gums
- ✓ Vitamin B5 & prebiotics
- ✓ Ultra mild pH neutral formula

The best defence for enamel, also taking care of your gums.
Protects against tooth and gum erosion with minerals and protective agents.

How does YOTU^{EL} erosion teeth & gums work?

- ✓ Cares for the oral microbiome.
- ✓ Cares for sensitive teeth and gums.
- ✓ Remineralises and recuperates enamel.
- ✓ Protects against caries and erosion.
- ✓ Protects soft tissues.
- ✓ Avoids plaque growth.
- ✓ Enzymatic whitening efficacy.
- ✓ No SLS or abrasives

Who is it for?

- ✓ People with enamel and dentin wear (microfractures)
- ✓ People with dental sensitivity
- ✓ People with delicate gums

- ✓ People with stress in their daily activity, consume acids in their diet such as soft drinks or juices and therefore cause an excessive presence of acid in the oral cavity.



- ✓ Protects the oral ecosystem
- ✓ With natural antioxidants and prebiotics
- ✓ 98% natural ingredients
- ✓ Ultra-gentle formula. pH neutral

If you are looking for a top quality toothpaste, for ultra-gentle, natural and eco-friendly oral hygiene, YOTUEL green is your ally.

- ✓ Packaging from controlled forests, made with a mixture of materials from FSC® certified forests, recycled materials and/or other controlled material.
- ✓ Tube of natural origin made from 100% recyclable sugar cane.
- ✓ We take care of nature

How YOTUEL Green Works

- ✓ Takes care of the oral microbiome.
- ✓ Natural ingredients with anti-caries and antioxidant activity.
- ✓ Enzymatic whitening efficacy.
- ✓ Contains no abrasives, no SLS, no colours, no artificial sweeteners, no sugar.

Who is it for?

- ✓ Those looking for natural products and who do not want to compromise on top quality.
- ✓ People aware of organic products. Eco friendly.
- ✓ Those concerned and respectful of the environment.

Target Audience

- Women / Men
- Medium-high purchasing power.
- Occupation: middle management or managerial positions.
- Active
- Cares about general health.
- Visits dentists at least 1 or 2 times a year.
- Wants to show off healthy white teeth.



Available exclusively from



Dental Practice Systems

01438 820550

07958 782141

info@dpsdental.co.uk

www.dpsdental.co.uk