

Edelweiss – single visit veneers

Dr Jason Greenwood writes...

Jason Greenwood
UK KOL for Edelweiss



Veneers can be a bit of a black art and you can very much be at the mercy of your technician as well. Do you prep to get a good result or do a minimal/no prep?

You can use composite of course either freehand or using one of the template systems to help to get a more pleasing morphology. Of course, no matter which direct composite is chosen, the mid to long term effect is compromised by the properties of the material. Used properly, staining is nowhere near the issue it used to be; however this does not prevent the biggest issue of all: lost lustre and vitality over time due to normal abrasion from toothpaste and function: see below. Ceramic veneering is the most stable option until now, but that is more demanding, time consuming and of course expensive for you and your patient.

I use Cerec routinely and even this amazing system can be a little fraught at times if you get bravely thin or use an earlier version of this pricey investment. Even though



Figure 3: This model clearly shows the transmission of colour through the Edelweiss veneer, easily blocking out the bright plaster

Figure 4: Before and after Edelweiss veneers

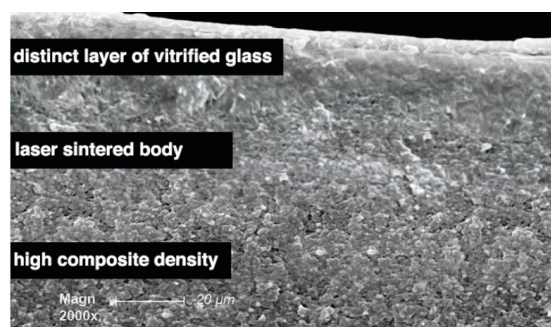


Figure 2a: SEM pic - Samples A / edelweiss veneer: Section: shows very high composite density and a distinct layer of sintered/vitrified glass. The composite structure is homogenous without pre-polymerized fillers, which has beside to the laser vitrification a very positive effect on the flexural modulus (19GPa).

you avoid the two week wait, cost and time are still issues of course.

There is now an easy to use, quality alternative: edelweiss veneers, brought to you by Dental Practice Systems (DPS) the sole distributor of edelweiss in the UK and Ireland.

Laser sintered, nano-hybrid composite veneer

Edelweiss is not like previous attempts you may have seen and is not a template or mould. These are laser sintered, nano-hybrid composite shells. The fabrication is excellent in both form and feel and will neither discolour nor lose its appearance in normal use. What that means of course

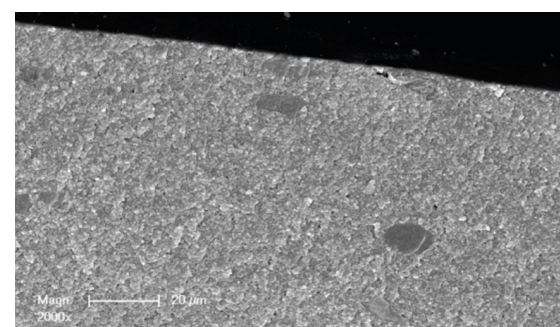
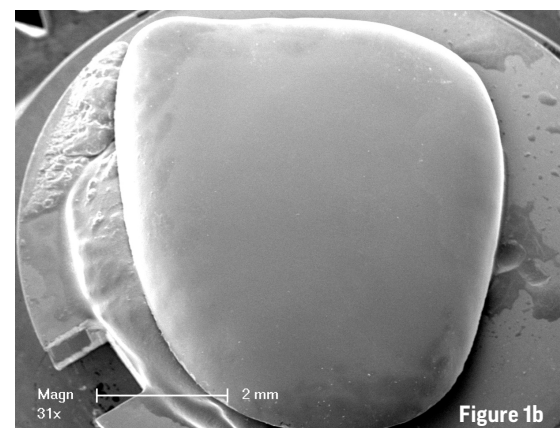


Figure 2b: SEM pic - Samples B / alternative prefab. comp. veneer: Section: shows much lower composite density than samples A and no distinct layer of sintered/vitrified glass. Interesting to see the very large pre-polymerized fillers (also at high magnification), which effect the flexural modulus in a negative way. (9GPa)

is that the surface is much denser with a significantly improved surface hardness and smoothness too compared with direct cured composite, due to the almost zero resin content at the surface. It is the softer resin that causes the problem (Figures 1a and 1b) (Figure 2).

Indications

- Anterior and posterior restorations
- Tooth discolourations
- Anatomical deformities
- Diastema
- Erosion
- Attrition
- Crown facings

Figure 5a



Figure 5b



Figure 5a and 5b: Before and (b) after

- Lifting the vertical dimension
- Semi-direct and indirect restorations.

Advantages

- One appointment
- Minimally invasive
- Natural look
- Long lasting
- Biocompatible
- Economical.

If you know how to use composite then there is not too much to surprise you. The supplied size chart is used to select the appropriate edelweiss veneer(s) which you then trim to suit. Once done, the inner surface is treated with supplied bond to activate the inner surface before fitting. Depending on the colour of the underlying tooth, the appropriate composite lute is selected before bonding to the tooth in the usual manner. These veneers are quite translucent, as is enamel; the colour coming from either the underlying tooth or the composite. Given the efficacy of the supplied composite at masking quite deep colours, achieving a good match is pretty straightforward; especially with some practice. This effective shade matching means that you do not need much material thickness for a lovely result. Indeed it is

quite normal to need to do little or no preparation to the tooth. With practice an edelweiss direct veneer can be fitted in 15 minutes meaning that a six tooth make-over can take from only 90 minutes saving both you and your patient time and money for a superior and stress free result.

What's in the box

The edelweiss intro kit comprises eight veneers of your chosen size as well as composite compules and bond. There are larger kits available too as well as occlusal onlays for posterior coverage.

As it comes with the kit and is developed by edelweiss, the composite really does compliment the aesthetics extremely effectively. Unlike many such materials, the difference between shades is both useful and noticeable (Figure 3) (Figure 4) (Figures 5a and 5b).

As stated previously; beautifully formed occlusal enamel shells and nano-hybrid composites are also available, as well as a unique single piece post & core system.

So...what do you do next? The easiest and best solution to any questions you may have is to either get in touch with DPS or better still, book on a hands-on course and see it for yourself. **D**

DENTAL PRACTICE SYSTEMS is now the sole distributor in the UK and Ireland for Edelweiss. 01438 820550, www.d-p-s.uk.com

<https://www.facebook.com/Dental-Practice-Systems-134974229930402/>

Edelweiss is running its first hands on course at Jason Greenwood's practice - Stafford Dental - on Friday 24 May 1pm.