

# NEW RESOLUTION

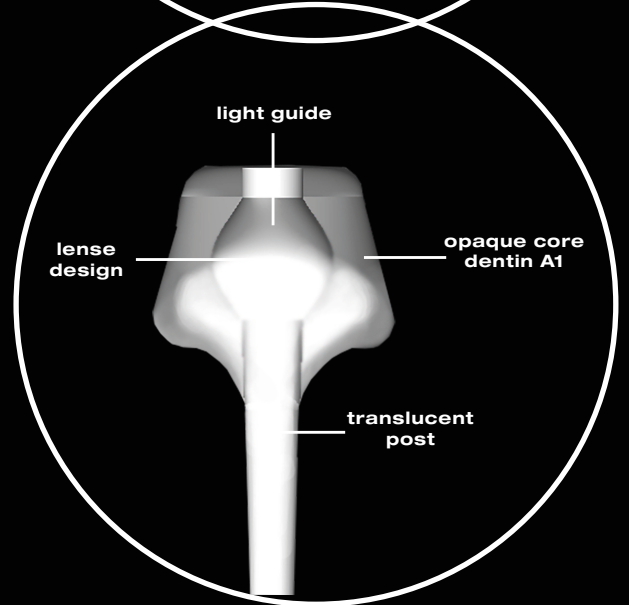
## DIRECT SYSTEM

# POST & CORE

### INNOVATION

The edelweiss POST & CORE system is a laser sintered monoblock which avoids the wedging effect. The posts have a conical shape for perfect post space adaptation. The translucency of the fibre free post, supported by the lense design, allows uninterrupted light transmission for complete polymerization.

The adhesive bonding also avoids the wedging effect. The preparation of the core feels like preparing the natural tooth and makes handling easier. The opaque buildup in A1 also offers different anatomical forms. The buildup from the edelweiss POST & CORE has a rough surface for better retention of the clinical crowns. It is possible to carry out the treatment in just one session, which is both time and cost effective for patient and dentist alike.



Translucent Post for periapical light polymerisation  
**Light Source:**  
"VALO by Ultradent"

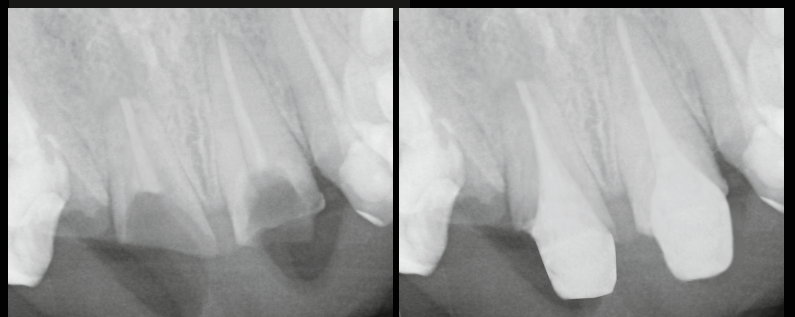


**Optimised workflow reduces chairtime up to 40 percent.**



The edelweiss POST & CORE system is a simple and a quick solution for all your post-endodontic needs. The one-piece composite POST & CORE can be customized as per the needs of the tooth with a true monoblock effect.

It is an ideal choice for rebuilding and strengthening broken down teeth. Cementation using dual cure composite material or adhesive resin cements.



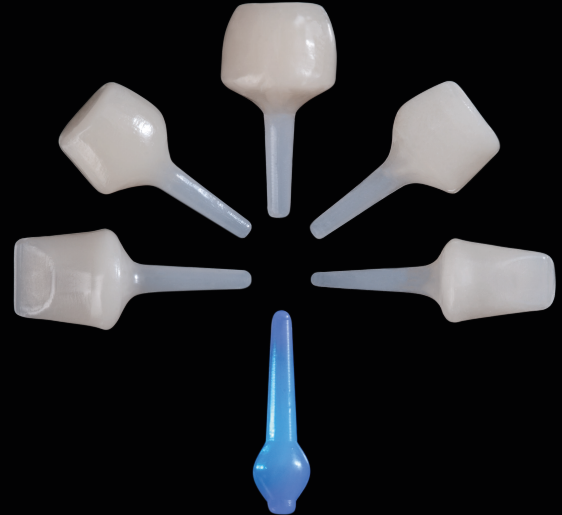


**Dr. Deepak Mehta**  
B.D.S, M.D.S, PhD  
Bangalore, India

# DIRECT SYSTEM POST & CORE

## edelweiss POST & CORE

«The material of the edelweiss POST & CORE is barium glass, strontium and zinc oxide (antibacterial) embedded in resin. The crystals are sintered to a monoblock which leads to perfect mechanics in the material. The flexural strength is similar to that of natural tooth. Congruent precision dental drilling creates a perfectly prepared post space. Different sizes of drills enable therapy for all dental anatomies. There are three different types of the edelweiss POST & CORE: anteriors, premolars and molars.»



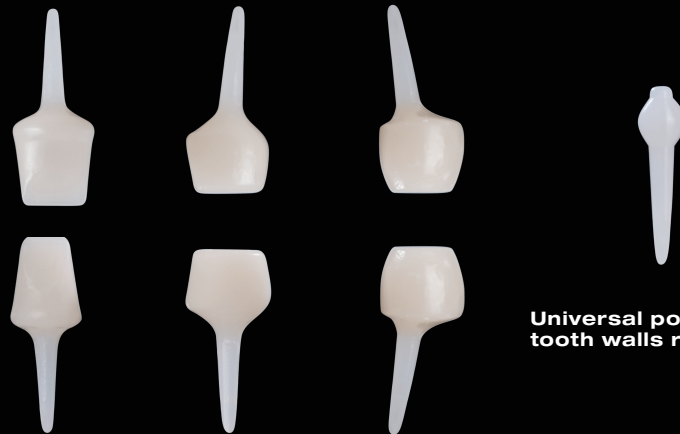
«The difference lies in the force buffer of the monoblock»

## ADVANTAGES

- Prefabricated POST & CORE
- Translucent Post for periapical light polymerisation
- Innovative monoblock of post and core with A1 buildup for natural integration
- Monoblock avoids wedge effect
- Biocompatible
- Flexural strength 20GPa like Dentin (15 - 20 GPa)
- Unmatched radiographic visibility
- Cuts like dentin
- Superior adhesion to the root canal
- One session, reduced treatment time
- Time and cost effective

## PRODUCT RANGE

Anterior up Premolar up Molar up & low



Anterior low Premolar low Molar up & low



Homogeneous inorganic structure

Laser sintered monoblock

Magn. 2000x | 100 µm

Technical Data	POST & CORE
Flexural Strength	200 MPa
Compressive Strength	550 MPa
Flexural Modulus	20 GPa
Surface Hardness	95 HV

(Source: internal data: R&D and QM department edelweiss dentistry)

Want more Information?  
Please click below for  
[Instructional Videos](#), [Interviews](#), [Lectures](#),  
[Articles](#), [Step by Step Instructions](#)

edelweiss dentistry products gmbh · Austria  
office@edelweiss-dentistry.com  
[www.edelweiss-dentistry.com](http://www.edelweiss-dentistry.com)

